

SMO (A68V)

Catalog Number: 26425

Gene Symbol: SMO; MRD21

Description: Anti-SMO (A68V) Mouse Monoclonal Antibody

Background: Smoothed is a protein that in humans is encoded by the SMO gene. Smoothed is a G protein-coupled receptor that is a component of the hedgehog signaling pathway and is conserved from flies to humans. It is the molecular target of the teratogen cyclopamine. SMO can function as an oncogene. Activating SMO mutations can lead to unregulated activation of the hedgehog pathway and cancer

Immunogen: A synthetic peptide from the internal region of SMO which includes the mutation of A68V, human origin.

Tested applications: ELISA, WB, IHC

Recommended dilutions:

ELISA: 1:1000-1:5000

WB: 1:500-1:1000

IHC: 1:50-1:100

Concentration: 1 mg/ml

Host: Mouse

Clonality: Monoclonal

Purity: Purified from ascites

Format: Liquid

Storage buffer:

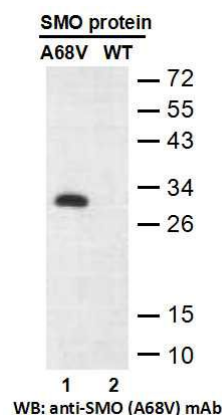
Preservative: no

Constituents: PBS (without Mg²⁺ and Ca²⁺), pH 7.4, 150 mM NaCl, 50% glycerol

Species Reactivity: Recognizes A68V mutant, but not wild-type SMO of vertebrates.

Storage Conditions: Store at -20°C. Avoid freeze / thaw cycles.

Western blot:

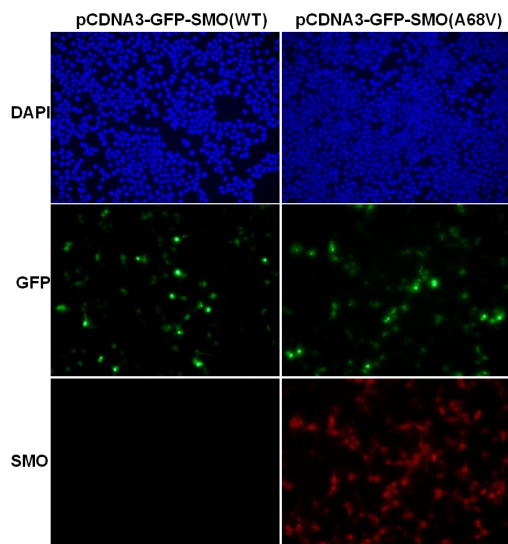


Western blot analysis of recombinant SMO (A68V) and wild-type proteins.

Purified His-tagged SMO (A68V) protein (lane 1) and corresponding wild-type protein (lane 2) were blotted with anti-SMO (A68V) monoclonal antibody (Cat. #26425).

For research use only. Not for diagnostic or therapeutic applications.

Immunofluorescence:



Immunofluorescence of cells expressing SMO proteins with anti-SMO (A68V) antibody.

HEK293T cells were transfected with pCDNA3-GFP-SMO (WT) plasmid (left column) or pCDNA3-GFP-SMO (A68V) plasmid (right column), then fixed and stained with anti-SMO (A68V) monoclonal antibody (Cat. #26425).

For research use only. Not for diagnostic or therapeutic applications.

24 Whitewoods Lane, Malvern, PA 19355 Tel: (610) 945-2007 FAX: (610) 945-2008
E-mail: sale@neweastbio.com Web: www.neweastbio.com