

G α_i

Catalog Number: 21006

Gene Symbol: Gnai

Description: Anti-G α_i Rabbit Polyclonal Antibody

Background: Heterotrimeric G proteins are critical cellular signal transducers. G α_i represents one sub-family of G proteins that could mediate the inhibition of adenylyl cyclases. Other biochemical and physiological functions of G α_i proteins are being explored.

Immunogen: Recombinant full length protein of G α_{i1}

Tested applications: ELISA, WB, IHC

Recommended dilutions:

ELISA 1:100-1:5000,

WB 1:100-1:2000,

Concentration: 1 mg/ml

Host: Rabbit

Clonality: Polyclonal

Purity: Purified from serum

Format: Liquid

Storage buffer:

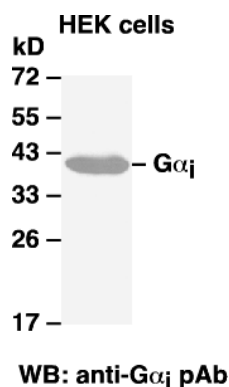
Preservative: no

Constituents: PBS (without Mg²⁺ and Ca²⁺), pH 7.4, 150 mM NaCl, 50% glycerol

Species Reactivity: G α_i antibody recognizes G α_{i1} , G α_{i2} , and G α_{i3} of vertebrates.

Storage Conditions: Store at -20°C. Avoid freeze / thaw cycles

Western blot:



Western blot analysis of G α_i proteins. G α_{i1} plasmid DNA was transiently transfected into HEK-293 cells. Whole-cell lysate was used for western blot with the polyclonal anti- G α_i antibody (cat # 21006).